



simpli|learn

PARTNER PROGRAM

www.simplilearn.com

About Simplilearn

Simplilearn is one of the world's leading certification training providers with offices in California (US) and India. Over the last six years, we have helped over 500,000 professionals across 150+ countries obtain certifications across a variety of disciplines including Cyber Security, Cloud Computing, Project Management, Digital Marketing, Data Science and more. We help brands such as Microsoft, HP, GE, Ford, P&G, Accenture, KPMG, Ogilvy and WPP execute their employee learning and development strategies.

We're the market leader with over 400 courses in 10+ categories



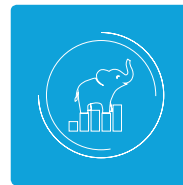
Digital
Marketing



Cloud
Computing



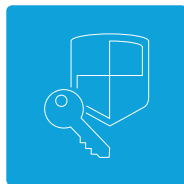
Agile &
Scrum



Big Data &
Analytics



IT Service &
Architecture



Cyber
Security



Mobile & Software
Development



Salesforce



Project
Management



Quality
Management

Powering learning at 2,000+ enterprises, including:



Simplilearn Partner Program

Partner with Simplilearn and help young professionals gain access to advanced courses and shape their careers better. We offer multiple partnership models and you can pick one that fits your business well.



Authorized Training Partners

Join us as an Authorized Training Partner and use Simplilearn courses to cater to learning needs of working professionals and enterprises in your geography.



Academic partners

Academic institutions can leverage Simplilearn courses and provide high quality job-oriented trainings to the students, faculty, and working professionals. Some of the reputed academic partners working with us are:



Online Course marketplace

As an online course marketplace, you can include 150+ Simplilearn online courses to your offerings. With Simplilearn, enhance your e-learning portfolio, win more customers, and scale your business.

Five reasons to partner with Simplilearn

As a Simplilearn partner, you will be equipped to leverage our cutting-edge training solutions to meet all the unique requirements of your customers, whether it is in terms of delivery of content or tracking of learning progress.

Here are five reasons why you should consider partnering with Simplilearn:



1. Enhance your course portfolio and grow your business

Expand your course portfolio and business by getting access to 400+ courses from 10+ categories including our most popular ones, such as Digital Marketing, Big Data, Cloud Computing and Project Management.

Our course catalogue is aligned with the world's renowned Certification Bodies:



Microsoft Azure



IBA[®] International Institute of Business Analysis[™]

THE Open GROUP



Silver
Microsoft
Partner



2. Become an e-learning provider

Partner with Simplilearn and add an impressive e-learning catalog to your brand at absolutely no additional investment. Your learners will be able to access our online course content, simulation tests, cloud-based labs, and more.

Start selling e-learning content by partnering with Simplilearn at absolutely no additional cost - no investment in content or in enabling technical infrastructure- we do it for you! You just need to bring in new customers and grow your business.



3. Win new customers

Our courses have been crafted by industry experts and are constantly updated to give learners the in-demand skills required to stay competitive in today's world. With a blended learning approach, which combines Online classes, Instructor-led live virtual classrooms, project work, and 24/7 teaching assistance, our course completion rate is 72% and this is much higher when compared with the industry average for course completion.



4. Hassle-free platform

Our easy-to-use UI enable you to assign courses, view progress, and eventually deliver greater value to your customers.

Name	Email	Course(s)	Account Status
MR Hao Peng	hpeng_2001@yahoo.com	PMI-PgMP [®]	Registered
3. Colin Williams	colin.williams@alumni.utoronto.ca	PMI-PgMP [®]	Registered
2. Noshia Wharton	noshiaw@hotmail.com	PMI-PgMP [®] Pending Activation	Not Registered
Imtiaz Fazal	imtiaf_fazal@newyorklife.com	PMI-PgMP [®] Pending Activation	Not Registered
Sydney Cody	scody@vanguardpacific.com	PMI-PgMP [®]	Registered
Vimmi Harwani	vimmi.harwani@gmail.com	PMI-PgMP [®]	Registered



5. Partner training and 24/7 support

You sell, we support - We take care of all support queries that your learners might have during their learning journey. Our dedicated channel managers will help you with additional support, training, and any form of assistance that you might need to get started.

Here's what our partners have to say



Simplilearn helped us add a plethora of online courses in different categories to our offerings and that has worked significantly well for our business

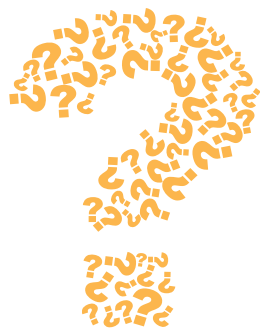


We at Quorse believe in making learning accessible and deliver on individual needs, and Simplilearn helps us to deliver on that promise.



With Simplilearn we are able to help our customers get trained in critical skills. I love the ease with which we can use the partner platform and deliver Simplilearn courses to our customers. It's totally hassle-free.





Frequently asked questions

As a partner, can I re-sell courses to both individuals and enterprises?

Absolutely! A partner can re-sell our courses and training programs to individuals, enterprises, or both.

How do I deliver Simplilearn courses to my customers?

Our partner portal helps you deliver Simplilearn courses to your customers. Managing learners, assigning courses, and tracking progress is simple and quick through this portal.

Do I have to make any initial investment to become a Simplilearn partner? How soon do I need to exhaust the credit amount?

We work around different partnership models depending on the nature and scale of your business. There is an initial partner registration fee, that gets credited back to your account on the partner portal. You can use this credit for your sales transactions. There is no validity period for the credit amount. However, to use the credits after your agreement period, you must renew your agreement with Simplilearn.

What kind of support can I expect from Simplilearn?

As a Simplilearn partner, you will have full access to course content, partner platform, marketing support, and customer care support. Marketing support includes (Brochure, Course Catalog, and newsletter updates). Simplilearn also offers dedicated account managers, who will help you with additional support, training, and any form of assistance that you might need to get started.

Will I be able to include my brand somewhere on the course page?

The course landing page will be co-branded. The page will have both Simplilearn and your brand logo. However, the course content will be solely branded with Simplilearn branding elements.

500,000+ careers fast-tracked around the world



USA

Simplilearn Americas LLC
201 Spear Street, Suite 1100, San Francisco, CA 94105
United States
Phone No: +1-844-532-7688

INDIA

Simplilearn Solutions Pvt Ltd.
53/1 C, Manoj Arcade, 24th Main, Harlkunte
2nd Sector, HSR Layout
Bangalore - 560102
Call us at: 1800-102-9602

partner@simplilearn.com

www.simplilearn.com